

# Park Pavilion

## 195 District Park

Final Plan Review  
December 20th, 2023

---

ARCHITECTURE RESEARCH OFFICE

1 Willoughby Square, 235 Duffield Street Suite 1200, Brooklyn, NY 11201

t 212.675.1870 f 212.675.1645 [www.aro.net](http://www.aro.net)

# Previous Community Comments

- **From July 19th Commission meeting and July 20th Community Engagement Event/Survey**

- “Having the pavilion will provide an excellent opportunity to gather with the community and enjoy”
- “Really beautiful. The shade features are much needed so thank you!”
- “I’d really like more echoes of Providence as a place”
- “The indoor seating area seems dark in the rendering, can it include skylights?”
- “I would love to see more renewable and/or recyclable materials incorporated in the design”
- “Concerned about loss of park grass/lawn”
- “Looks very welcoming and open”
- “I love how this activates the park and fully claims this as a community space”
- Amenities to support dog walking would be appreciated
- Ponding in the existing park along the Elbow Street pathway is a persistent issue

# Previous Design Review Panel Comments

- **Positive Design Attributes**

- General siting of the pavilion - this location creates a terminus to the view from the bridge and is highly visible from other entrances to the park without disrupting important view corridors
- Activity generated by the dining space on the east side of the pavilion will help activate and populate the park plaza
- The specific shape of the pavilion is responsive to specific sightlines and creates ample shaded spaces beneath the canopy trellis above
- The low profile, shape, and texture of the building make the building an appropriate backdrop to the park when viewed from all directions
- The palette of materials work well together, complement the landscape, and will serve as a handsome backdrop for the graphics and color that will be introduced by tenants

# Previous Design Review Panel Comments

- **Recommended Areas of Study**

- Clarify grading around the pavilion and how it is resolved as it interacts with park circulation and landscape features
- Generate a detailed roof plan and cross-sections that identify all core-and-shell and potential tenant roof top equipment and other associated building penetrations
- The dining space needs more architectural definition
- Doorways from the dining area to the back of house spaces such as kitchen and restrooms should be more visually concealed
- The exterior restaurant seating area should incorporate low fencing to control movement out of areas where alcohol is served
- The project should include information about base building lighting, especially beneath the shade canopy
- The design team should evaluate if some portion of the canopy can be made non-porous in order to shelter the exterior seating from precipitation
- Tenant signage incorporation should be explored and signage guidelines developed



## Park Pavilion - Bird's Eye View



Aerial view of the western foot of the Michael S. Van Leesten Memorial Bridge; 195 District Park plaza; proposed art installation; and new park pavilion with green roof, canopy, and outdoor seating.



# Project Plan



Pavilion plan and surrounding landscape. The immediate area around the park pavilion is populated with restaurant, ancillary, and informal park seating options. The pavilion is enveloped in planting that broadens the influence of the planted southern park edge. New planters and paving define program and circulation zones.



## Pavilion Perspective - View of Pavilion from Michael S. Van Leesten Memorial Bridge



View from the western foot of the Michael S. Van Leesten Memorial bridge, looking at the 195 District Park plaza, pavilion, and park.



## Pavilion Perspective - View of Pavilion from North Lawn



View from north park lawn facing south west. A broad shade canopy extends from the canopy on all sides. Signage is suspended from the canopy in front of their respective tenant spaces. The perimeter of the pavilion is surrounded by fixed benches. An outdoor dining area is wrapped by a series of movable planters. In front of the outdoor dining lie clusters of public park seating.



## Pavilion Perspective - View looking toward Pavilion Interior from Outdoor Dining



View from outdoor dining space facing southwest. Signage suspended from the shade canopy can be seen to the left. Openings to the kitchen/back of house, restroom, and into the adjacent ancillary tenant space are carved into the far interior demising wall. Final interior finishes and lighting are to be designed and provided by the tenant.



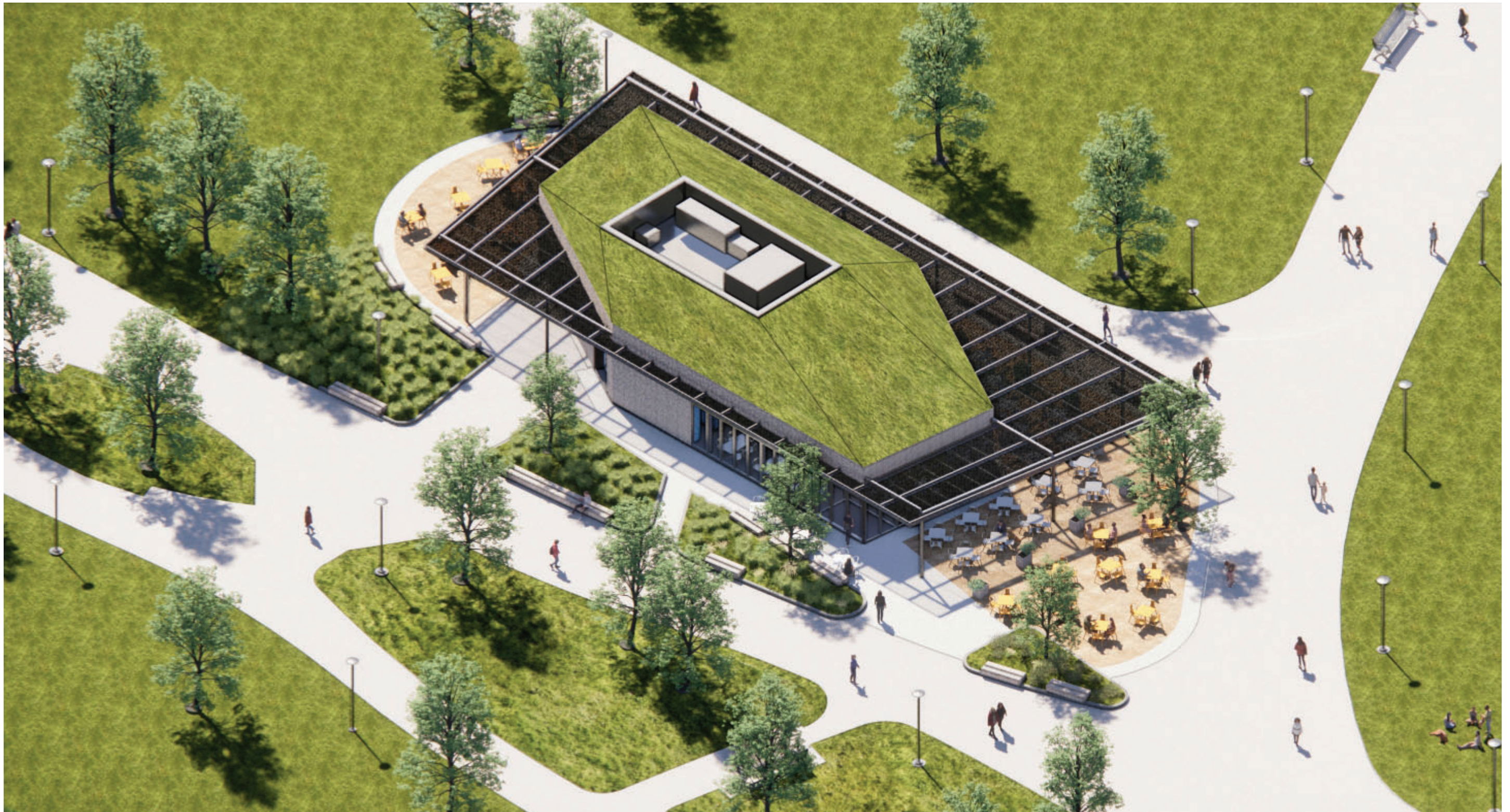
## Pavilion Perspective - View looking toward Park and Bridge from Interior Dining (Doors Open)



View from primary tenant dining space facing east. The glazed entry vestibule is center-right. HVAC ductwork, light fixtures, and other building infrastructure are suspended from the exposed hybrid structure. Final interior finishes and lighting are to be designed and provided by the tenant.



## Pavilion Landscape - Aerial from Southeast



Aerial view of the pavilion, green roof, outdoor seating, and landscape. Facing north west. The primary outdoor dining area is defined by a series of movable planters. Seating lies atop a bed of stone dust paving (inclusion and extents of stone dust are still being explored.)



## Pavilion Landscape - Aerial from Northwest



Aerial view of the pavilion, green roof, outdoor seating, and landscape. Facing south east. Fixed benches and loose park seating populate the pavilion periphery. Grouped seating lies atop a bed of stone dust paving (inclusion and extents of stone dust are still being explored.)



## Project Landscape - View from Elbow Street Pedestrian Pathway



View from the Elbow Street pathway showing built-in benching, loose outdoor seating, and the pavilion ancillary vendor. Facing east.



## Project Landscape - View from Park West Lawn



View of the landscape and pavilion from the west park lawn. The hardscape is populated with loose park furniture which can be rearranged to accommodate small gatherings and performances. Facing east.



## Project Landscape - View from Ship Street Pedestrian Pathway



View of the landscape and pavilion from the southern Ship Street pathway. The mounded planters are framed by stone curbs intermittently populated by built-in benches. Facing east.



# Project Palette

ARCHITECTURE



Cedar Rainscreen, Silvered



Anodized Storefront System, Operable



Aluminum Grating, Trellis



Woolly Planting, Green Roof

PARK



Concrete Paths



Permeable Paver

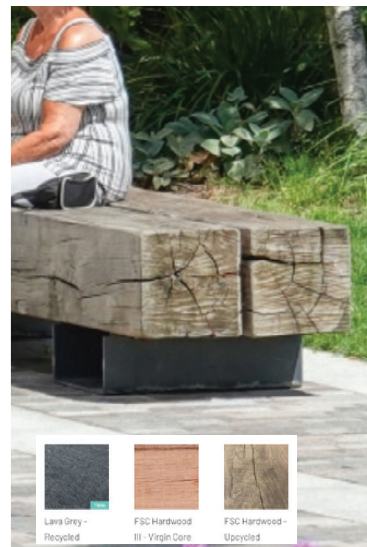


Riprap



Wood and Granite

SITE



Wood Tops for Seating



Reclaimed Granite Blocks



Granite Curb



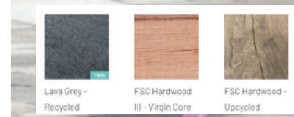
Granite Sett



Stone Fine



Movable Planter



The landscape and architectural palette use complimentary, environmentally conscious, and resilient materials. Inclusion of stone fines in the project is still being explored.



## Exterior Lighting - View from North Lawn



Twilight view from north park lawn facing south west. In-ground up lights wash the storefront structure with light. Wall grazers integrated in the exterior wall assembly accent the cedar siding.



## Exterior Lighting & Signage - View from Elbow Street Pedestrian Pathway



Twilight view from Elbow Street pathway facing east toward Michael S. Van Leesten Memorial Bridge.



## Exterior Lighting & Signage - View from Ship Street Pedestrian Pathway



Twilight view from Ship Street pathway facing east. Exterior lighting rendering from Design Development presentation.



## Exterior Lighting & Signage - View from Elbow Street Pathway near Outdoor Dining



Twilight view from Ship Street pathway near the outdoor dining area facing east. A constellation of down lights populate the shade canopy, creating an illuminated dining area at nighttime.



# Thank you.